



**COMMUNITY SERVICE BASED
CHRISTIAN CELEBRATION**

2011 Dec 11

***Helping our community with caring love while enabling them to
find and follow Jesus!***

Church for people disillusioned with church, who want to make a difference!

True love and caring . . .

Romans 12:9-17

Love must be honest and true. Hate what is evil. Hold on to what is good. Love each other deeply. Honor others more than yourselves. Never let the fire in your heart go out. Keep it alive. Serve the Lord. When you hope, be joyful. When you suffer, be patient. When you pray, be faithful. Share with God's people who are in need. Welcome others into your homes.

Bless those who hurt you. Bless them, and do not call down curses on them. Be joyful with those who are joyful. Be sad with those who are sad. Agree with each other. Don't be proud. Be willing to be a friend of people who aren't considered important. Don't think that you are better than others.

Don't pay back evil with evil. Be careful to do what everyone thinks is right. If possible, live in peace with everyone. Do that as much as you can.

Agenda (see news letter)

ACTIVITY	DURATION EXPECTED
INTRODUCTORY/ OPENING PRAYER	5 min
Gathering / Communicating Community needs	10 min
Gathering prayer needs	5 min
Prayer for community and praying for needs	15 min
Short Message/ Discussion /Helpful thoughts to remember from the bible	30 min
Gathering of the monetary contributions for the community work (tithes)	5 min
Praise and Worship Music (counting of monetary contributions, join in or get something to drink / eat at the same time)	15 min
Prayer for wisdom in distribution of monetary contributions	5 min
Discussion on work parties and activities planned to support the community over the next period (specifically for the next week)	15 min
Voting on where the monetary contribution is to go for God's work in the community	5 min
Closing prayer	5min

Community needs?

ACTIVITY	DURATION EXPECTED
INTRODUCTORY/ OPENING PRAYER	5 min
Gathering / Communicating Community needs	10 min
Gathering prayer needs	5 min
Prayer for community and praying for needs	15 min
Short Message/ Discussion /Helpful thoughts to remember from the bible	30 min

Activity	DATE	DAY
Moving food to food bank. Wood at Cindy(ED??) propane equipment for X	9 Dec	Fri
Moving food for food bank in Burkes Falls	16 Dec @ meet 4pm	Fri
Christmas food basket delivery (Morry &Ken/Penny to providing transport)	17 Dec	Sat

**THEN WE WILL BE TAKING A CHRISTMAS “PAUSE”
UNTIL
6 JANUARY 2012**

***This doesn't mean we don't help if hear of a need, only that SGC meetings aren't happening.
Call Ken/Penny with any needs!***

Notes on Needs from last week

Critical Need : “X” with cancer needs oil (contact via Barb). Have cancer, live alone, cannot work, been buying oil for heating. \$4000 needed (less other contributions 1500) makes need= \$2500.(Proposal +\$1000)Now spent \$333.12, and another donation of \$200 has been received.

SERIOUS:

MEDIUM:

Man in Kearney 6ft4 needs a bed and dresser. Currently sleeps on a blow-up mattress on the floor. ←=====WE COMPLETED THIS LAST SUNDAY

Person single mom needs 11 cords wood and will also need oil. (ED?)

LOW:

Computer – for January

Newborn baby supplies needed.(doesn't have washer and drier-need to use laundramat)

Planning - Dave F tiling

Spring painting of deck (for lady with the stairs that were fixed)

Spring: raking of leaves

REMINDER:

Wood for winter – stockpile = 5cords THANKS!

Mr.T – He had stroke, wife ill, 3 cords going tomorrow, may need more in the future. move 5 cords maybe....

Judas Purses Incoming

- Taylor **\$350** in purse
 - Wood \$1200, \$850 (not \$600), paid 9 cords delivered (15Oct) , 11 cords outstanding,
- Kathleen \$172 in purse
 - Missions \$172
- Shinara \$102 +\$60(Taylor)
- Morry \$247 in purse
- Barb **\$670** for X's propane furnace

- This week \$325
- $\$102 + \$60 + \$247 + \$325 = \$734$

Last weeks proposal

- Deal with the bed + dresser
- Washer
- Remainder to X : \$432



\$302



Used \$150

See website

Sort message/ discussion

Dead Sea and ME

ACTIVITY	DURATION EXPECTED
Prayer for community and praying for needs	15 min
Short Message/ Discussion /Helpful thoughts to remember from the bible	30 min
Prayer for wisdom in distribution of monetary contributions	5 min
Discussion on work parties and activities planned to support the community over the next period (specifically for the next week)	15 min
Voting on where the monetary contribution is to go for God's work in the community	5 min

For those who are not knowing what the Dead Sea is, **it is a salt lake** that is between Israel on the east and Jordan on the west. It's shores are about 1388ft below sea level and it has **33.7% salt in its water**, making it one of the saltiest naturally occurring waters on earth. It is fed by the Jordan river which is the only source of water, but it **has no outflow**, causing the salt brought in by the river to accumulate.



Where is the Dead Sea?



Where is the Dead Sea?

The [Jordan River](#) is the only major water source flowing into the Dead Sea, although there are small perennial springs under and around the Dead Sea, creating pools and [quicksand](#) pits along the edges.^[8] There are no outlet streams.



Rainfall is scarcely 100 mm (4 in) per year in the northern part of the Dead Sea and barely 50 mm (2 in) in the southern part. The Dead Sea zone's aridity is due to the [rainshadow](#) effect of the [Judean Hills](#). The highlands east of the Dead Sea receive more rainfall than the Dead Sea itself.

To the west of the Dead Sea, the Judean Hills rise less steeply and are much lower than the mountains to the east. Along the southwestern side of the lake is a 210 m (700 ft) tall [halite](#) formation called "[Mount Sodom](#)". - Wikipedia

What is the Dead Sea?



With Israel, Jordan, Syria all needing it's water, this will be disaster.

Not only because the water will dry up, but the lack of water will fuel aggression

and this within the already turbulent political and religious climate,

It will be like dropping a lit candle into a haystack.



Where is the Dead Sea?

Jordan river
water is being used up!



It is predicted that the Dead sea will cease to exist as a sea by around 2050A.D.

View from Mt Sodom

Currently the dead sea level is dropping around 1 m per year

Climate data for Dead Sea

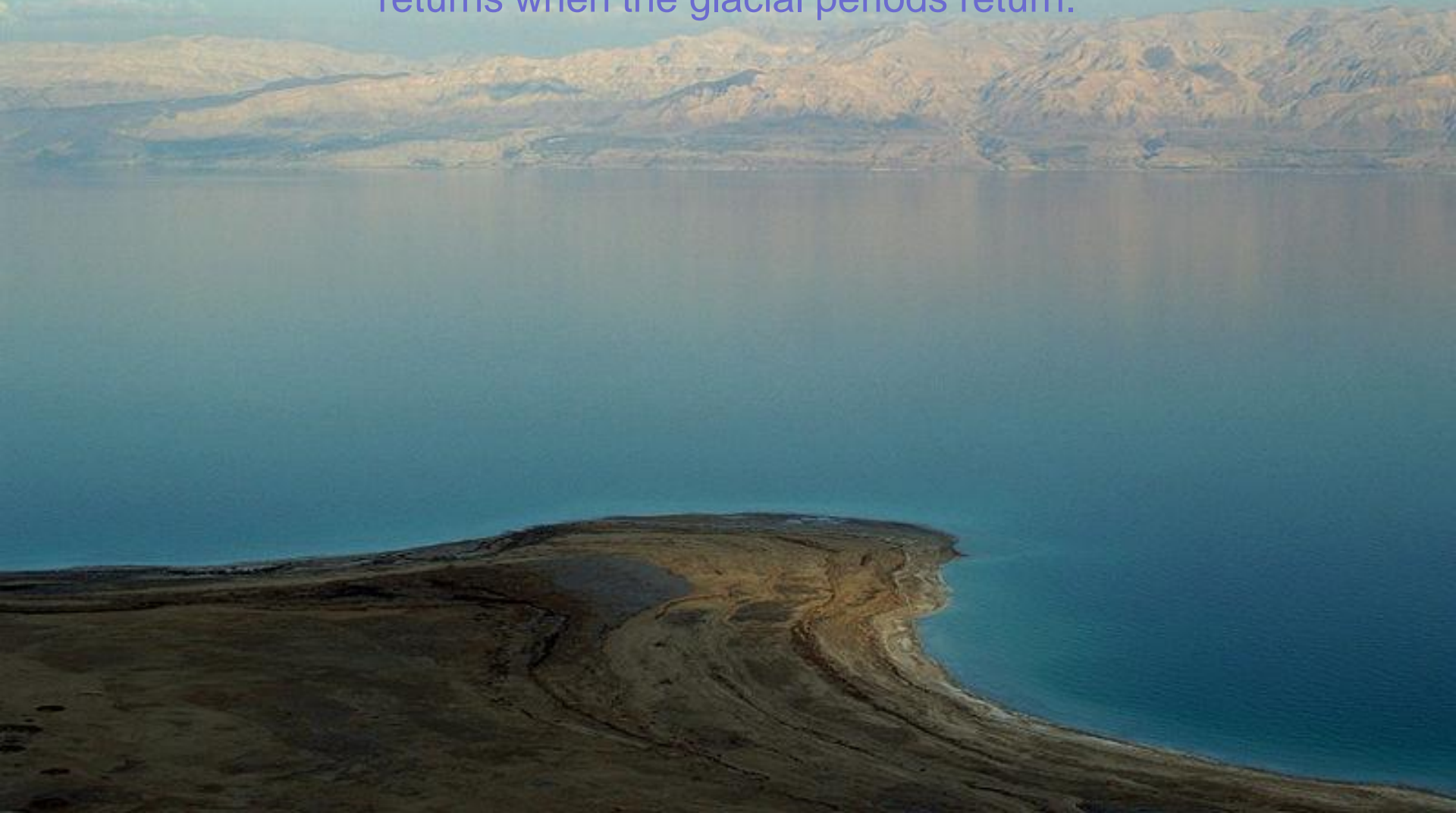
Month	Jan	Feb	Mar	Apr	May	Jun	Jul	Aug	Sep	Oct	Nov	Dec
Record high °C (°F)	28.4 (79.5)	30.4 (86.7)	33.8 (92.8)	42.5 (108.5)	45.0 (113.0)	46.4 (115.5)	47.0 (116.6)	44.5 (112.1)	43.6 (110.5)	40.0 (104.0)	36.0 (95.0)	28.5 (83.3)
Average high °C (°F)	20.5 (68.9)	21.7 (71.1)	24.8 (76.6)	29.9 (85.8)	34.1 (93.4)	37.6 (99.7)	39.7 (103.5)	39.0 (102.2)	36.5 (97.7)	32.4 (90.3)	26.9 (80.4)	21.7 (71.1)
Average low °C (°F)	12.7 (54.9)	13.7 (56.7)	16.7 (62.1)	20.9 (69.6)	24.7 (76.5)	27.6 (81.7)	29.6 (85.3)	29.9 (85.8)	28.3 (82.9)	24.7 (76.5)	19.3 (66.7)	14.1 (57.4)
Record low °C (°F)	5.4 (41.7)	6.0 (42.8)	8.0 (46.4)	11.5 (52.7)	19.0 (66.2)	23.0 (73.4)	26.0 (78.8)	26.8 (80.2)	24.2 (75.6)	17.0 (62.6)	9.8 (49.6)	6.0 (42.8)
Precipitation mm (inches)	7.8 (0.307)	9.0 (0.354)	7.6 (0.299)	4.3 (0.169)	0.2 (0.008)	0.0 (0)	0.0 (0)	0.0 (0)	0.0 (0)	1.2 (0.047)	3.5 (0.138)	8.3 (0.327)
% humidity	41	38	33	27	24	23	24	27	31	33	36	41
Avg. precipitation days	3.3	3.5	2.5	1.3	0.2	0.0	0.0	0.0	0.0	0.4	1.6	2.8

Source: Israel Meteorological Service^[13]

Until recently it was not known if the Dead Sea had been in the same situation in the past . . .

. . . and now they think it also started to dry up about 120 000 years ago.

The water flowing in seems to dry up in hot periods and then the sea returns when the glacial periods return.



**With Israel,
Jordan, Syria all
needing it's
water, this will
be disaster.**

Not only because
the water will dry
up, but because
the lack of water
will fuel
aggression

and this within
the already
turbulent political
and religious
climate,

It will be like
dropping a lit
candle into a
haystack.



Where is the Dead Sea?

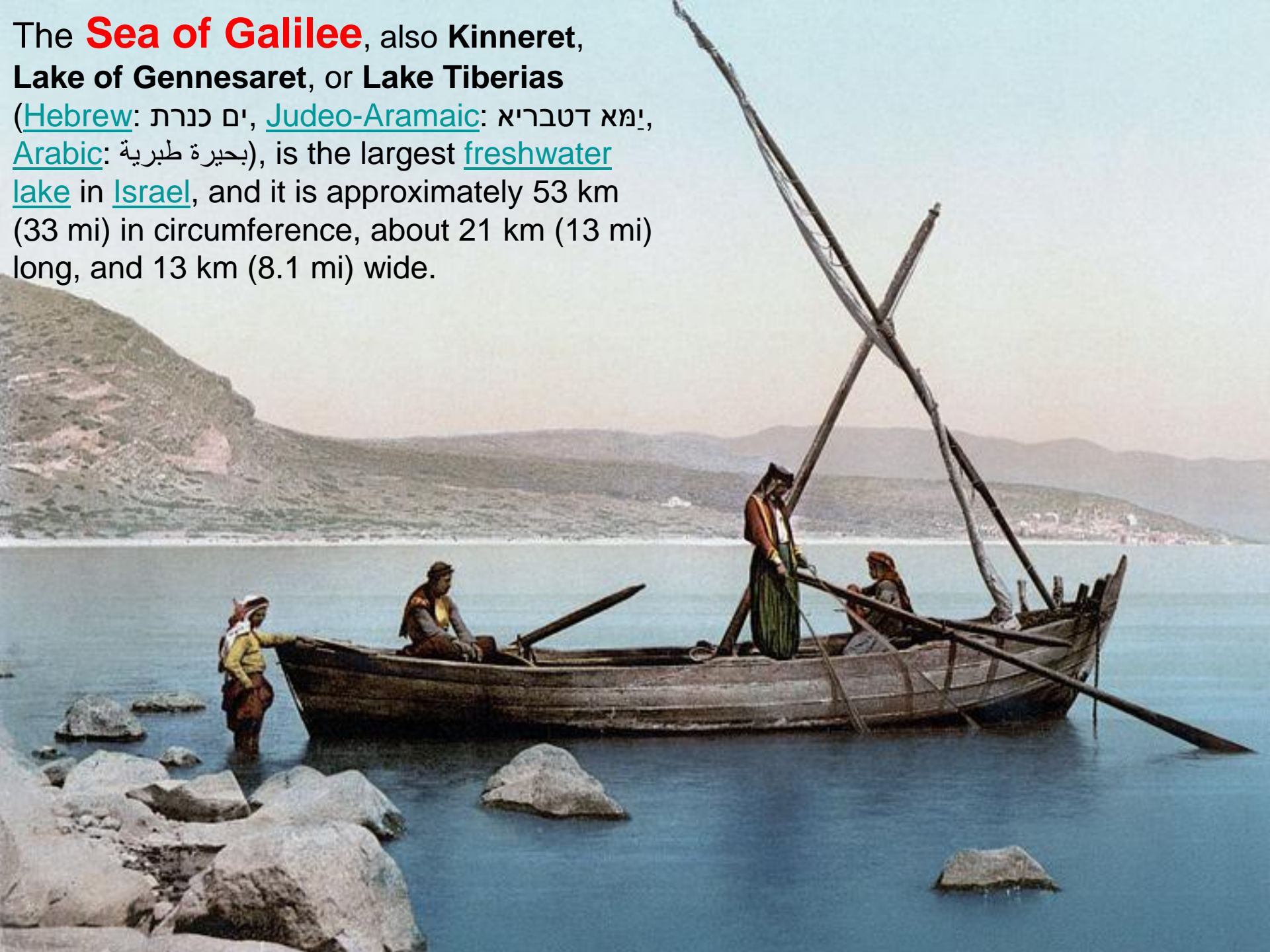
Jordan river

This time it is different!

**The drying up... is being
accelerated by the need
for water in cities along
the route that feeds the
Dead Sea.**

**GREED and
SELFISHNESS
is killing this Sea**

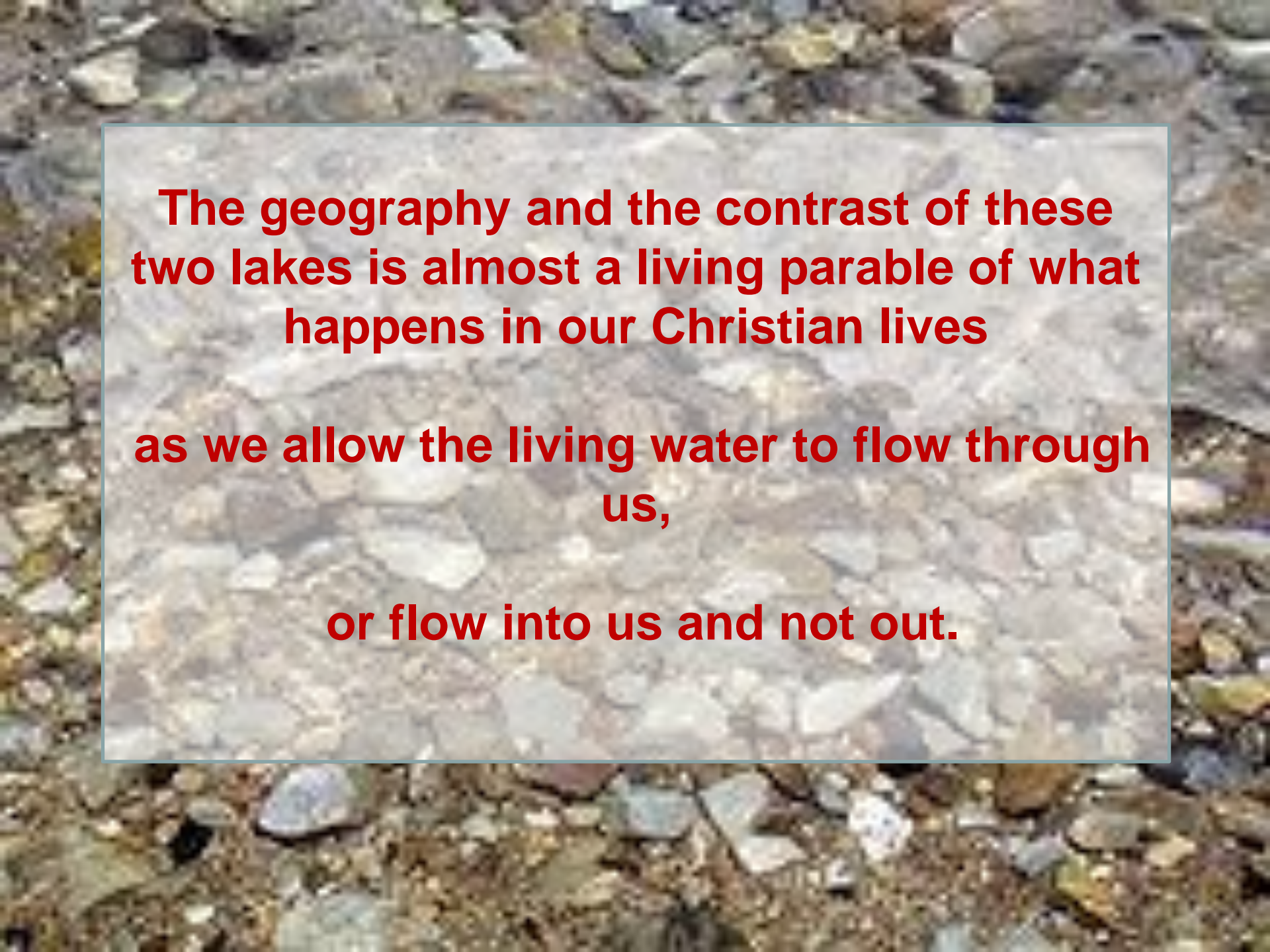
The **Sea of Galilee**, also Kinneret, Lake of Gennesaret, or Lake Tiberias (Hebrew: ים כנרת, Judeo-Aramaic: יַמָּא דְּטַבְרִיא, Arabic: بحيرة طبرية), is the largest freshwater lake in Israel, and it is approximately 53 km (33 mi) in circumference, about 21 km (13 mi) long, and 13 km (8.1 mi) wide.





Higher up the Jordan river is the **Sea of Galilee**, well known by those of us that read the bible as Jesus spent considerable times on it and its shores.

This is a vibrant life filled lake that is in stark contrast to the more southern lifeless Dead Sea. **The water flows in and out of the Sea of Galilee, unlike the Dead Sea.**



**The geography and the contrast of these
two lakes is almost a living parable of what
happens in our Christian lives
as we allow the living water to flow through
us,
or flow into us and not out.**

**What am I
talking about?**

I am talking about “LIVING WATER” the great “I am”

The Samaritan woman at the well is an episode in the life of Jesus that appears only in the Gospel of John, in John 4:4-26. In Eastern Orthodox Church tradition, she is known as Photina. – *Wikipedia* According to the John 4:7 on

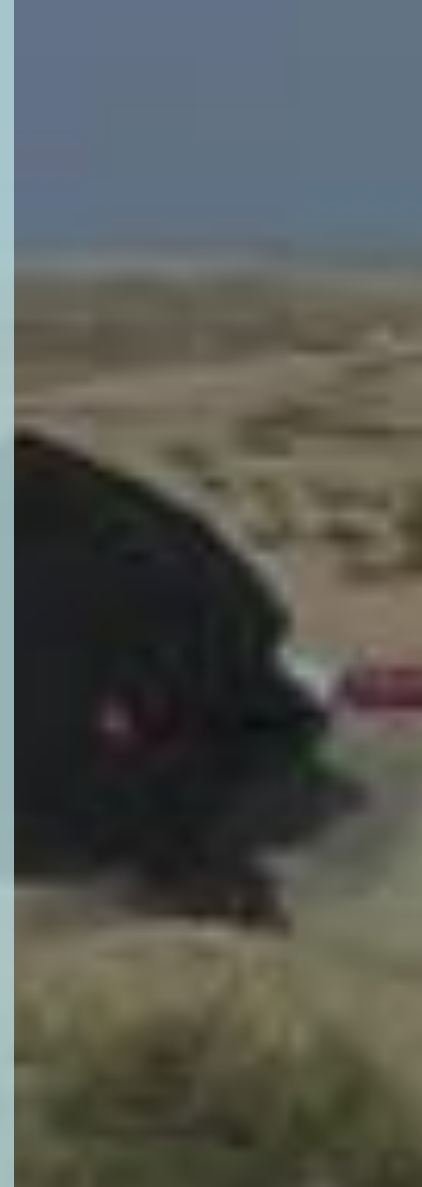
When a Samaritan woman came to draw water, Jesus said to her, “Will you give me a drink?” (His disciples had gone into the town to buy food.)

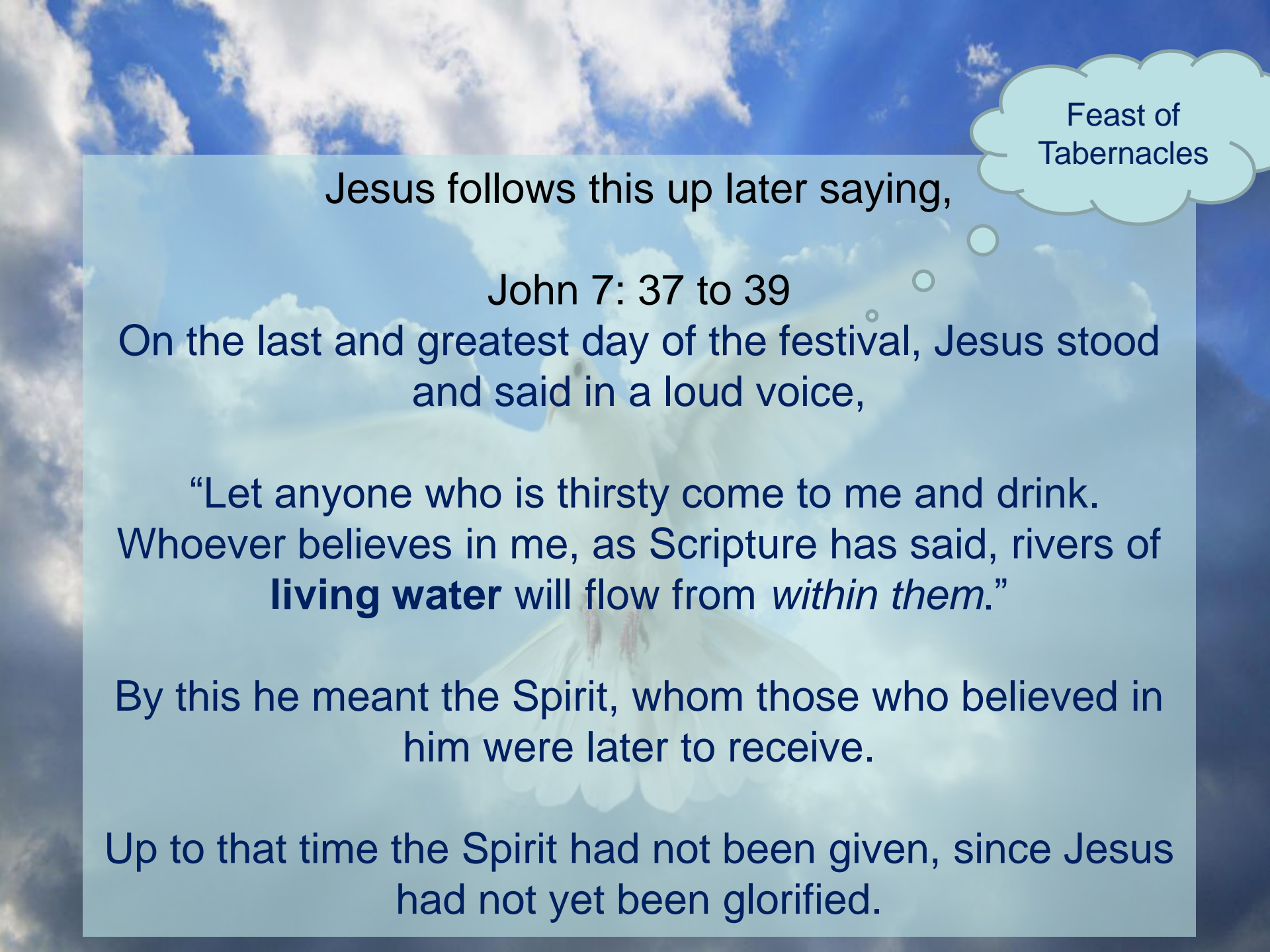
The Samaritan woman said to him, “You are a Jew and I am a Samaritan woman. How can you ask me for a drink?” (For Jews do not associate with Samaritans.[a])

Jesus answered her, “If you knew the gift of God and who it is that asks you for a drink, you would have asked him and he would have given you **living water.**”

“Sir,” the woman said, “you have nothing to draw with and the well is deep. Where can you get this **living water**? Are you greater than our father Jacob, who gave us the well and drank from it himself, as did also his sons and his livestock?”

Jesus answered, “Everyone who drinks this water will be thirsty again, **but whoever drinks the water I give them will never thirst. Indeed, the water I give them will become in them a spring of water welling up to eternal life.**”





Feast of
Tabernacles

Jesus follows this up later saying,

John 7: 37 to 39

On the last and greatest day of the festival, Jesus stood
and said in a loud voice,

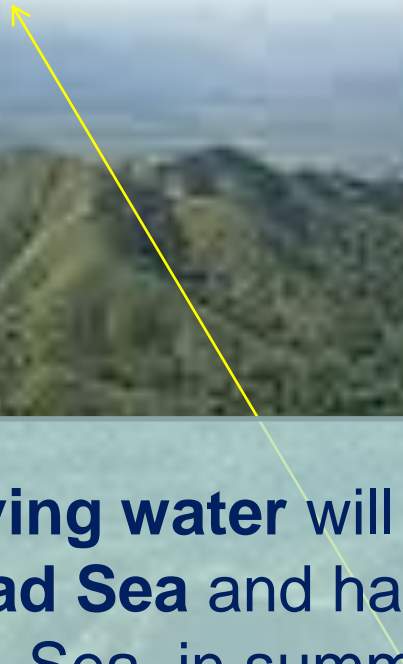
“Let anyone who is thirsty come to me and drink.
Whoever believes in me, as Scripture has said, rivers of
living water will flow from *within them*.”

By this he meant the Spirit, whom those who believed in
him were later to receive.

Up to that time the Spirit had not been given, since Jesus
had not yet been glorified.

Prophecy, a view with many perspectives and hidden timelines!

And then to link this to our discussion of
the Dead Sea,
the bible also says in a prophecy
about the end times in
Zechariah 14:8



- ⁸ On that day **living water** will flow out from Jerusalem, half of it east to the **Dead Sea** and half of it west to the Mediterranean Sea, in summer and in winter.
- ⁹ The LORD will be king over the whole earth. On that day there will be one LORD, and his name the only name.

The background of the slide is a photograph of a rugged, rocky coastline. In the foreground, there are large, light-colored, textured rocks. In the background, a body of water is visible under a clear sky.

It is clear from these references that the Dead Sea is used as an example of death and dying.

Jesus refers to himself as the living water and anyone from the region where water is so precious would immediately think of the wonderful flowing Jordan river and the magnificent Sea of Galilee.

(I know to those of us who are blessed with bigger lakes and more water such as we find here in Canada, we don't quite get this, but imagine how these people feel)

Jesus therefore, was linking himself with
the giving of life.



Jesus therefore, was linking himself with
the giving of life.

The prophecy clearly shows a rejuvenation of the Dead Sea
when Jesus is King.

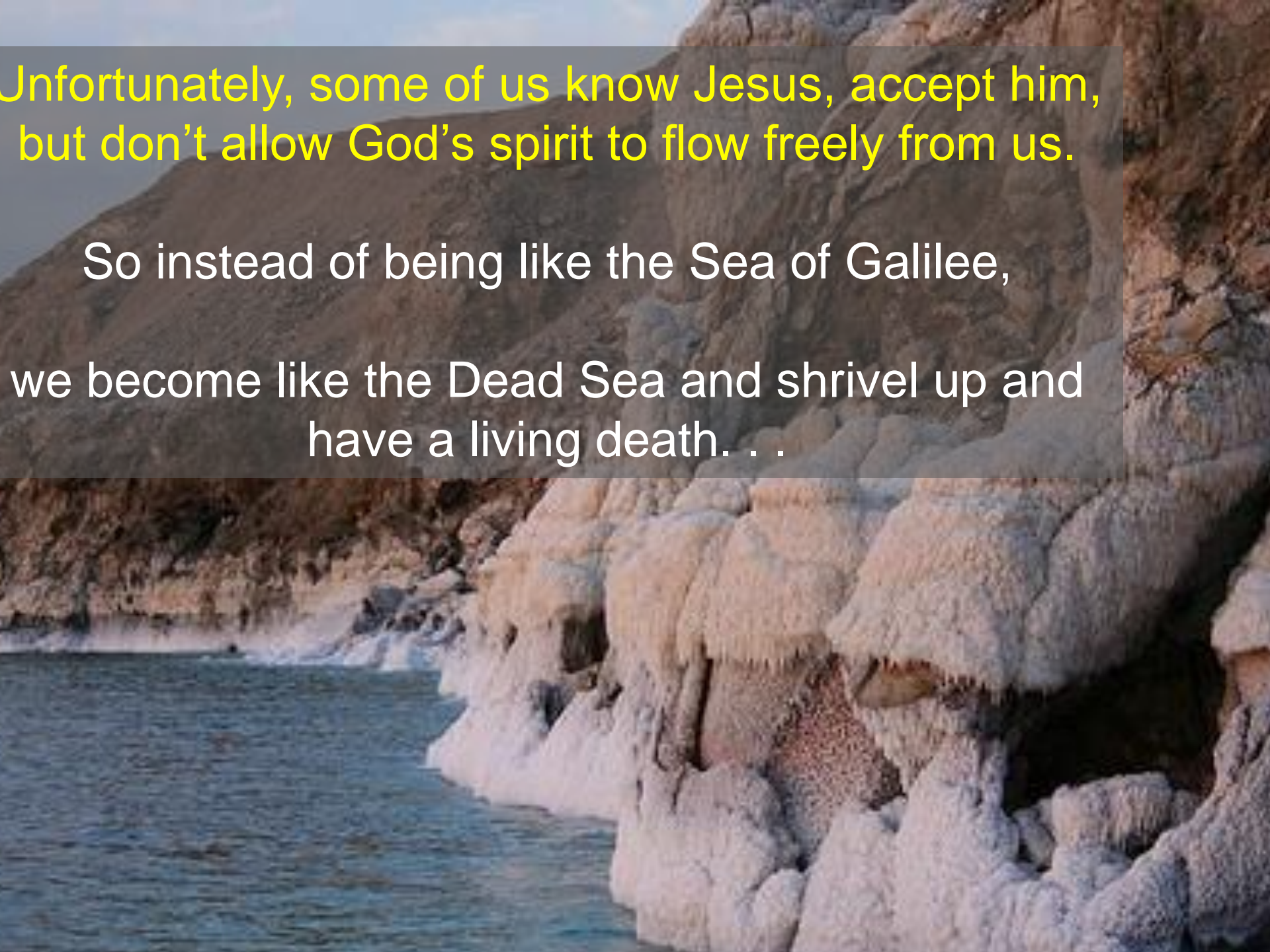
*Similarly, when we are allowing Jesus to flow in and out
of our lives, . . .
. . .we have life!*


⁸ On that day **living water** will flow out from Jerusalem, half of it
east to the **Dead Sea** and half of it west to the Mediterranean
Sea, in summer and in winter.

⁹ The LORD will be king over the whole earth. On that day there
will be one LORD, and his name the only name.

Unfortunately, some of us know Jesus, accept him,
but don't allow God's spirit to flow freely from us.

So instead of being like the Sea of Galilee,
we become like the Dead Sea and shrivel up and
have a living death. . .



A long-exposure photograph of a waterfall cascading over mossy rocks in a lush forest. The water is blurred, creating a sense of continuous flow. The surrounding area is covered in green moss and vegetation, with trees visible in the background.

Can I suggest
that to fully
experience life

we have to let
God's Spirit **flow**
into us and then
out through us?

How about we
start letting that
happen today?

Agenda

ACTIVITY

DURATION EXPECTED

Pass a hat! Gathering of any monetary contributions for the community work

5 min

Praise and Worship Music (counting of monetary contributions, join in or get something to drink / eat at the same time)

15 min

Prayer for wisdom in distribution of monetary contributions

5 min

Discussion on work parties and activities planned to support the community over the next period
(specifically for the next week)

15 min

Voting on where the monetary contribution is to go for God's work in the community

5 min

Closing prayer

5min

Agenda

ACTIVITY

DURATION EXPECTED

Praise and Worship Music (counting of monetary contributions, join in or get something to drink / eat at the same time)

15 min

Prayer for wisdom in distribution of monetary contributions

5 min

Discussion on work parties and activities planned to support the community over the next period
(specifically for the next week)

15 min

Voting on where the monetary contribution is to go for God's work in the community

5 min

Closing prayer

5min



Next slide. . .

Notes on Needs from this week

Critical Need : “X” with cancer needs oil (contact via Barb). **Have cancer, live alone, cannot work, been buying oil for heating. \$4000, guessing \$1000 outstanding**

SERIOUS:

MEDIUM:

Person single mom needs 11 cords wood and will also need oil. (ED?)

LOW:

Computer – for January

Newborn baby supplies needed.(doesn't have washer and drier-need to use laundramat)

Planning - Dave F tiling

Spring painting of deck (for lady with the stairs that were fixed)

Spring: raking of leaves

REMINDER:

Wood for winter – stockpile = 5cords THANKS!

Mr.T – He had stroke, wife ill, 3 cords going tomorrow, may need more in the future. move 5 cords maybe....

Judas Purses Incoming - Now

- Taylor **\$350** in purse+Shinara \$60(Taylor)
 - Wood \$1200, \$850 (not \$600), paid 9 cords delivered (15Oct) , 11 cords outstanding,
- Kathleen \$172 in purse
 - Missions \$172
- Morry \$254 **+\$250=\$504**
 - (\$102 promised to X for furnace)
 - (\$152 promised for washer)
 - Holding **\$250** for this week
- Barb **\$0**
- **This week income**
 - **\$250(X, but wait for bill)**
 - **\$150(electrician for X) Barb and Richard**

This weeks proposal

- Washer \$152
- Remainder to X : \$102
- This week
 - \$250(X, but wait for bill)
 - \$150(electrician for X) Barb and Richard
- (Family “need” gifts will be dealt with separately)
- (If wood is needed we have 5 cords [Shinara] in reserve and will use the \$250 if necessary for this)

Agenda

ACTIVITY

DURATION EXPECTED

**Prayer for wisdom in distribution of
monetary** contributions

5 min

**Discussion on work parties and activities
planned** to support the community over the
next period
(specifically for the next week)

15 min

**Voting on where the monetary contribution
is to go** for God's work in the community

5 min

Closing prayer

5min

Agenda

ACTIVITY

DURATION EXPECTED

**Prayer for wisdom in distribution of
monetary** contributions

5 min

**Discussion on work parties and activities
planned** to support the community over the
next period
(specifically for the next week)

15 min

**Voting on where the monetary contribution
is to go** for God's work in the community

5 min

Closing prayer

5min



COMMUNITY SERVICE BASED CHRISTIAN CELEBRATION

***Helping our community with caring love while enabling them to
find and follow Jesus!***

Church for people disillusioned with church, who want to make a difference!